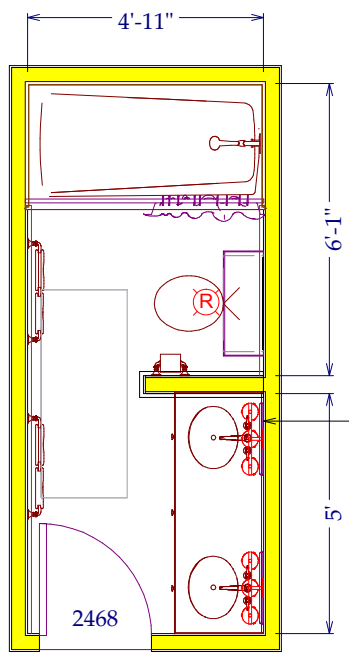


Make the end wall 48"h with trimmed cap  
Remove the soffit and can lights and re-finish sheetrock  
Add recessed medicine cabinets in front of each sink  
Remove medicine cabinet on right hand wall and refinish

**Master Bath**  
Design Plan  
Scale 1/4"=1'



Make the end wall 41"h with trimmed cap  
Remove the soffit and can lights and re-finish sheetrock

**Hall Bath**  
Design Plan  
Scale 1/4"=1'